

AIM Statement: By September 2024, increase the proportion of inpatients with radiologically-significant ascites receiving a timely paracentesis (within 12 hours of hospital admission) from <10% to over 80%.

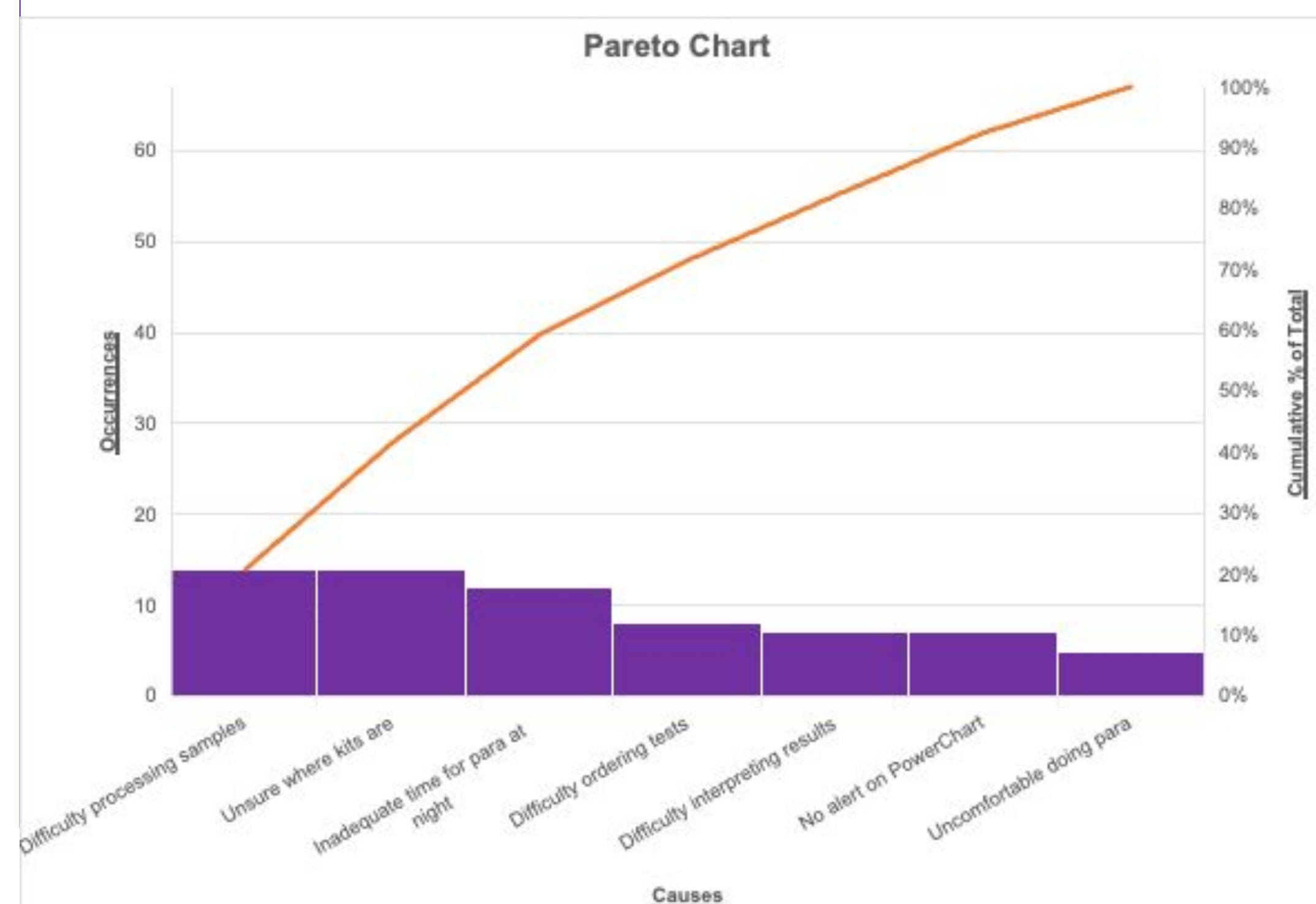
PROBLEM DEFINITION

Laboratory reporting of ascites fluid analysis, educational and systemic issues resulting in delays to paracentesis make it challenging for prompt recognition and appropriate management of SBP in patients at LHSC.

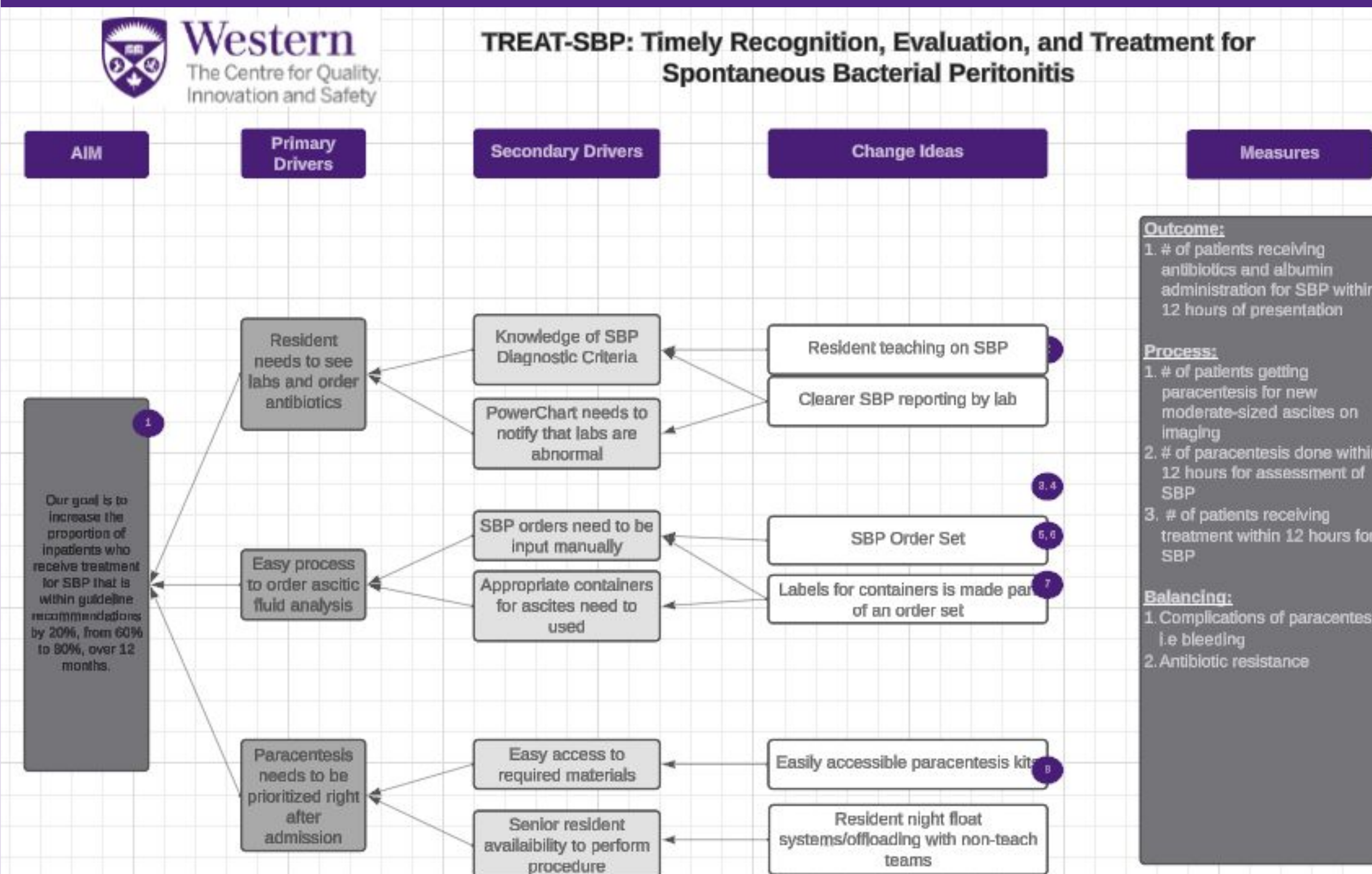
ROOT CAUSE ANALYSIS

Our stakeholder analysis, surveying medical learners including medical students and residents at LHSC, identified several critical areas for improvement in the management of ascites samples:

- Knowledge Deficit:** Residents demonstrated limited understanding of the correct procedures for ordering and processing ascites samples.
- Resource Accessibility:** There was a notable lack of awareness among residents about the locations of paracentesis kits and the ability to access them.
- Analytical Challenges:** Residents faced challenges in interpreting the results of ascitic fluid analyses, indicating a need for enhanced training or support tools.



Targeted educational handouts significantly improved timely paracentesis of patients with ascites by medical learners at LHSC.



IMPLEMENTATION

PDSA cycle # 1: Education Initiative

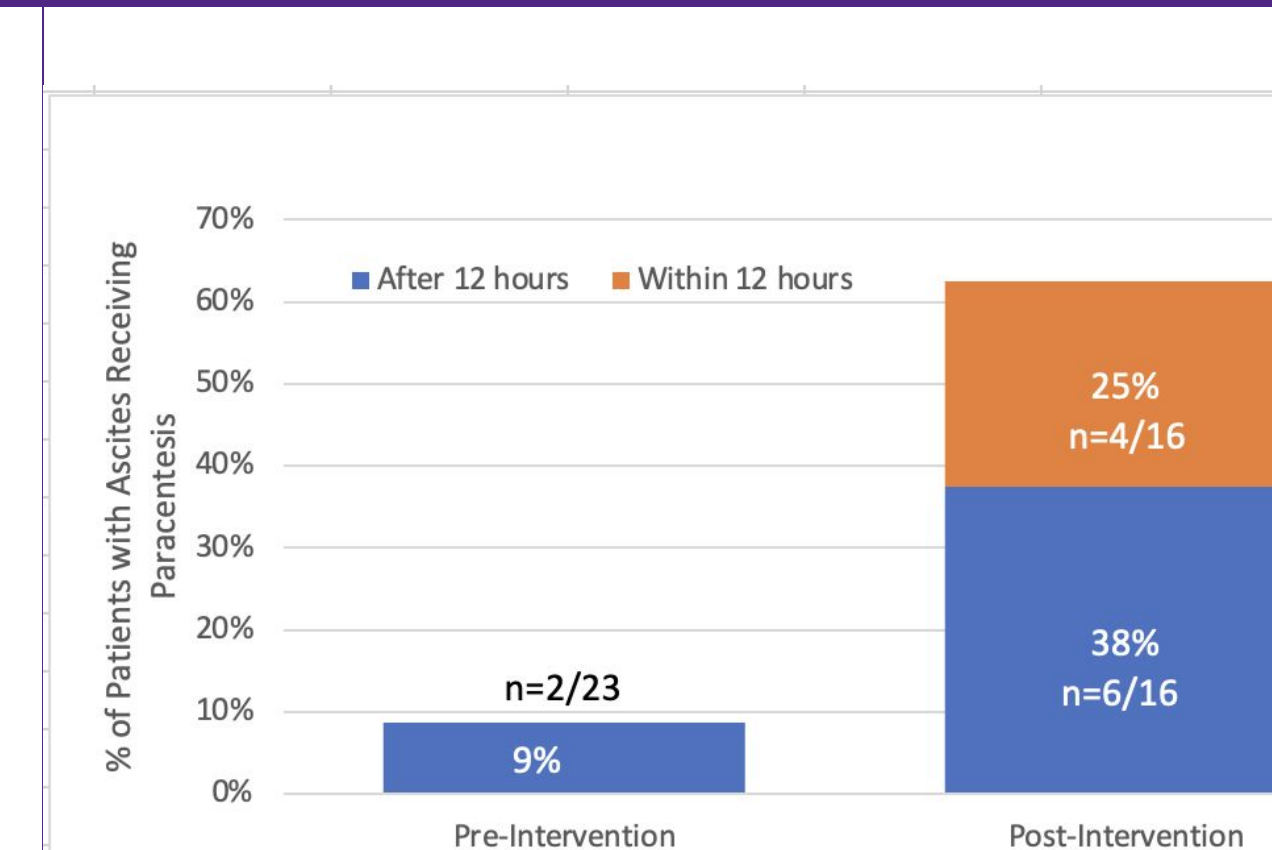
PLAN: Enhance ascites management skills among LHSC medical learners by using an educational handout.

DO: Send handout to learners rotating through GI and CTU. Post handout in team rooms.

STUDY: Evaluate knowledge via pre- and post-intervention quizzes. Track changes in the timeliness of paracentesis and the percentage of patients receiving correct treatment.

ACT: Refine the handout based on feedback and explore additional learning tools such as simulation sessions.

MEASUREMENT & RESULTS

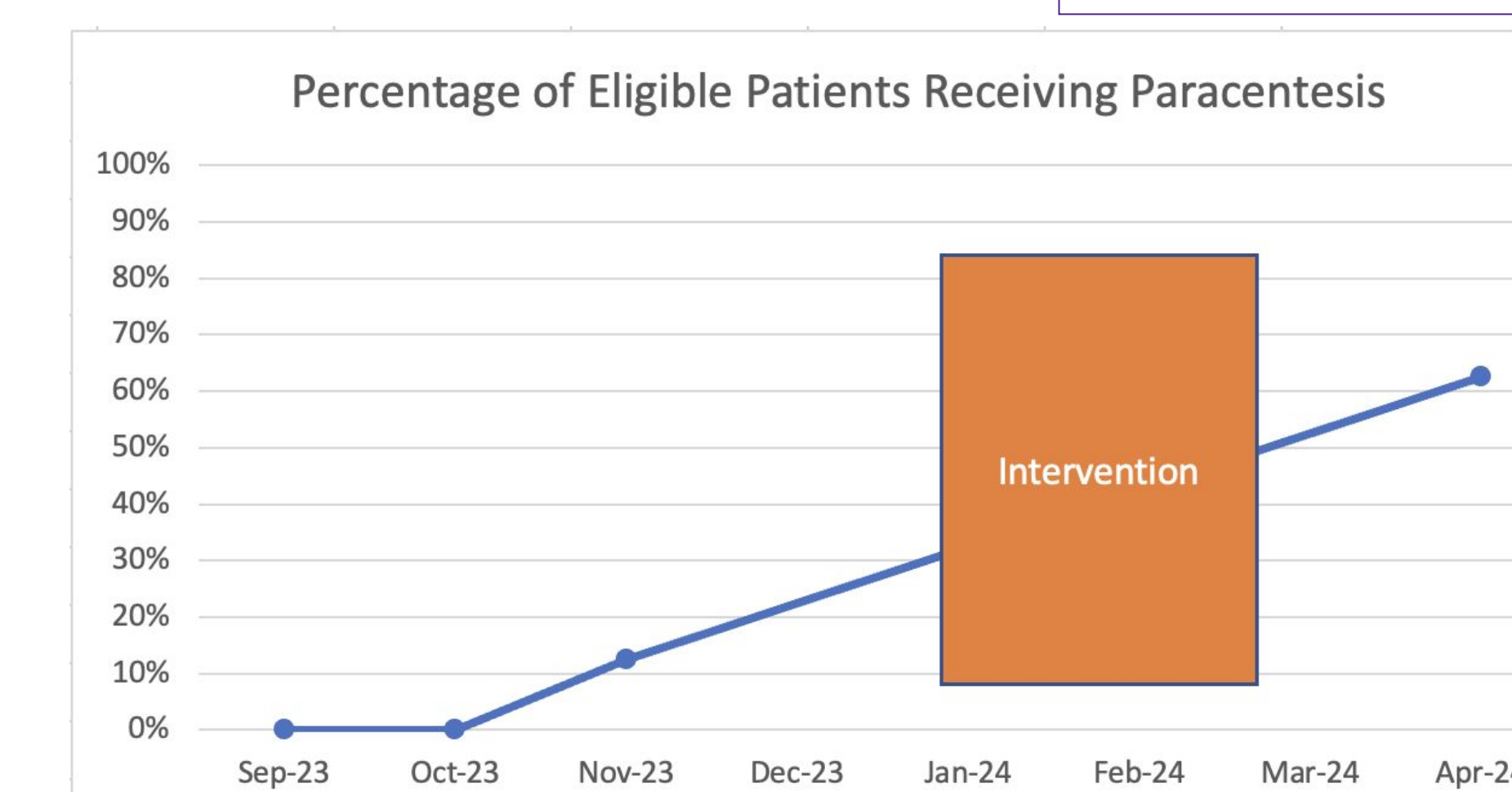


Process Measures:

- Number of patients with moderate to severe ascites on imaging who undergo paracentesis
- Number of paracentesis performed appropriately within 12 hours of presentation

Balancing Measures:

- Complications of paracentesis
- Amount of time taken away from other clinical duties



SUSTAINABILITY

Documentation of New Standard:

- Educational handout included in standard orientation materials for GI service residents.
- Available on "Chief Drive" in the internal digital repository, accessible to all learners.

Monitoring Plan:

- Implement continuous monitoring plan with SPC chart analysis.
- Collect learner feedback to refine educational interventions